

Column 1: Lists the drive labels and file systems (FAT or NTFS).

Column 2: Lists the total space of each drive.

Column 3: Lists the free space of each drive.

Column 4: Lists the number of data packages that have been allocated on each disk. NOTE: if a row's value is zero, the DVR SERVER cannot record on that drive because there is no free allocated disk space available. After successfully completing Disk Management, the value in this column should change to something other than 0.

Column 5: Lists the data package size to be used. The system will calculate data package automatically according to the free space. For the each disk drive, the higher the free space value, the higher the Residual Data Package value.

Column 6: This column is used to distribute the data package, and is explained in more detail below.

Step 1) Select the recording file storage drives.

If you don't want to record on a drive, for example drive C (the most common label for the system drive), set the "Allotted Data Package" value to 0. If you want to record to the D drive, but its Allotted Data Package is 0, you should use My Computer to do a quick NTFS format for Drive D before proceeding with this step.

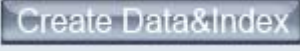
Disk Drives	Total Size(M)	Free Space(M)	Allotted Data Package	Residual Data Package	New Data Package
C:\ (NTFS)	30718	23543	0	91	0
D:\ (NTFS)	31000	25335	0	98	0

2) Select the storage capacity to save recording data.

- If you want use an entire drive's capacity to save recording data, you should select the maximum value from the drop-down in the "New Data Package" column for that particular drive. We recommend leaving some free space, so

select the fifth value from the highest. For example, if you have 200, select 196.

E:\ (NTFS)	43998	32690	0	127	127
------------	-------	-------	---	-----	-----

Then click the  button. After finished, the system will create a folder named “_RECORD_DATA_” in that drive, and will allocate all storage space for DVR recording. There will be no more free space on that drive.

E:\ (NTFS)	43998	114	127	0	0
------------	-------	-----	-----	---	---

- If you want a drive to have some spare space, select a value other than the maximum value from the drop-down in the “New Data Package” column for that particular drive, e.g. 100.

E:\ (NTFS)	43998	32690	0	127	100
F:\ (NTFS)	46908	13420	0	52	100
					101
					102
					103
					104
					105
					106
					107

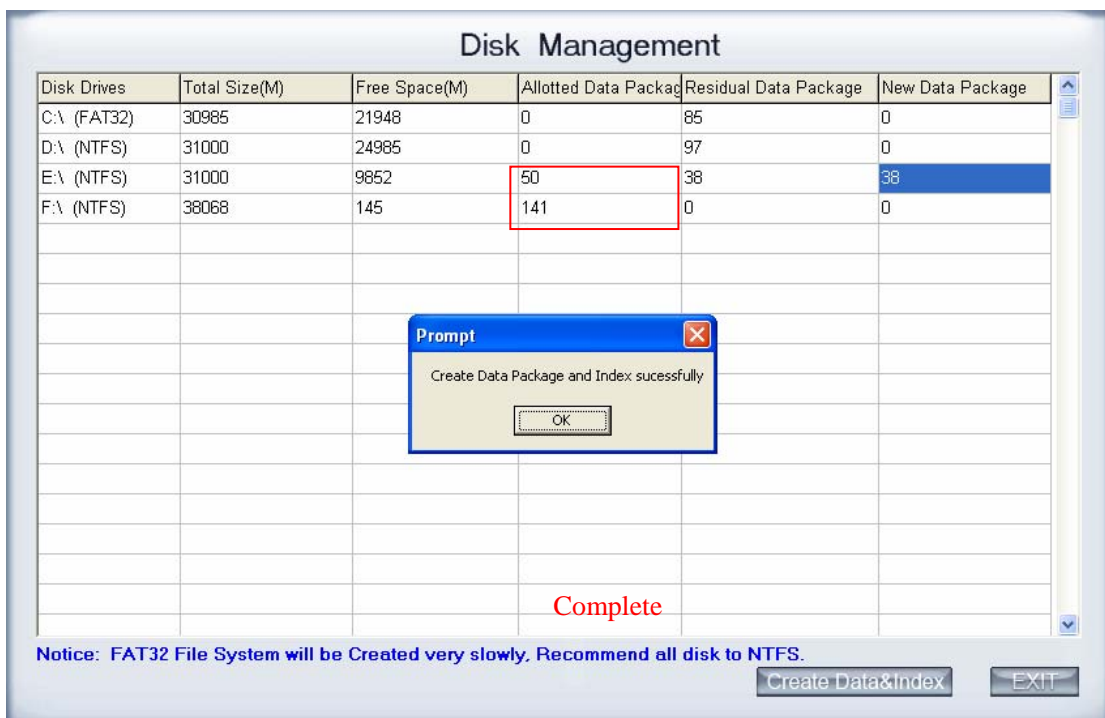
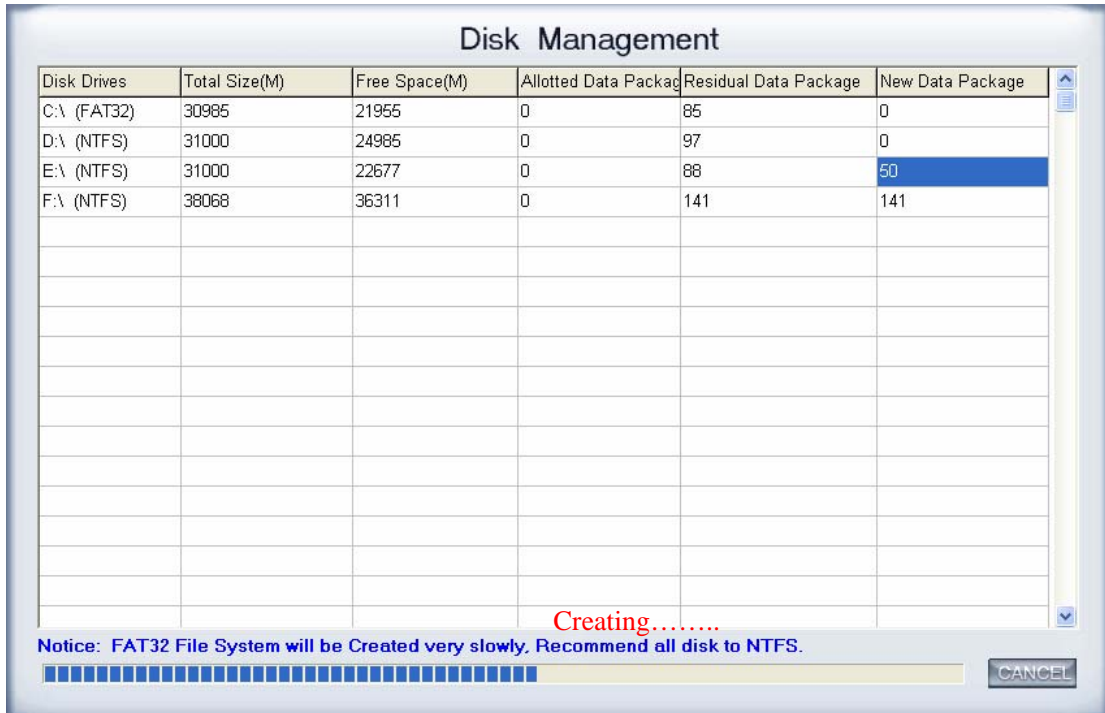
In the above example, the E drive has $100 \times 256\text{MB} = 25,600\text{MB}$ space to save DVR recording data, and the folder named “_RECORD_DATA_” capacity is 25,600MB. The E drive will keep $27 \times 256\text{MB} = 6912\text{MB}$ as free space for non-DVR recording. The 27 was calculated by subtracting 100 from 127. The 256MB size is set by default, and cannot be changed.

E:\ (NTFS)	43998	7040	100	27	27
------------	-------	------	-----	----	----

3) Configure the other disk drives that will to be used to save DVR-recording files.

Repeat step 2 for each storage drive.

4) Click the  Button to create the Allotted Data Package.



After creating the Allocated Data Package, the column's value should now be changed. The disk drive will now show decreased free space, and there will be a folder named _RECORD_DATA_ in which the DVR-recordings will be stored.



